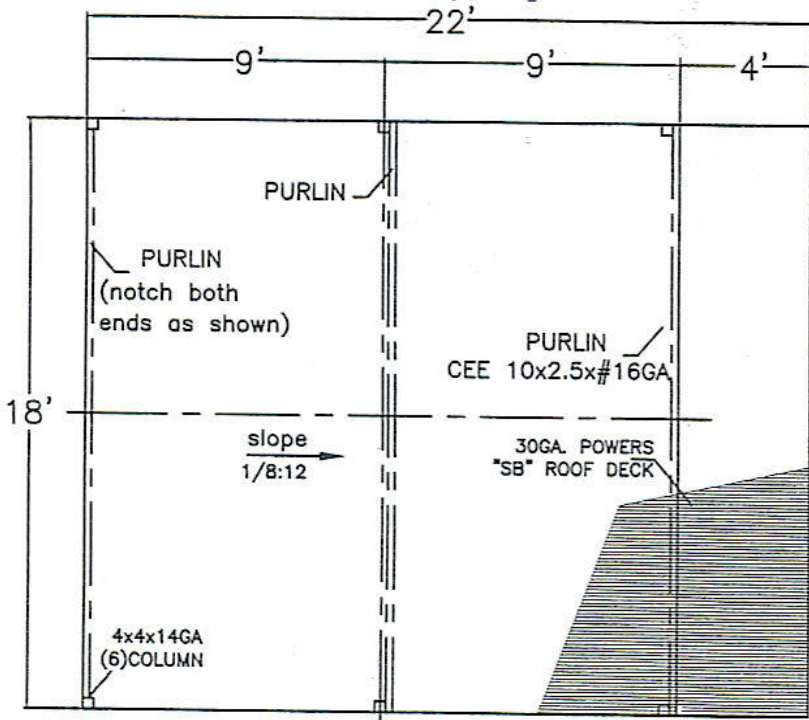


18x22'x15'/20 psf barn installation instructions



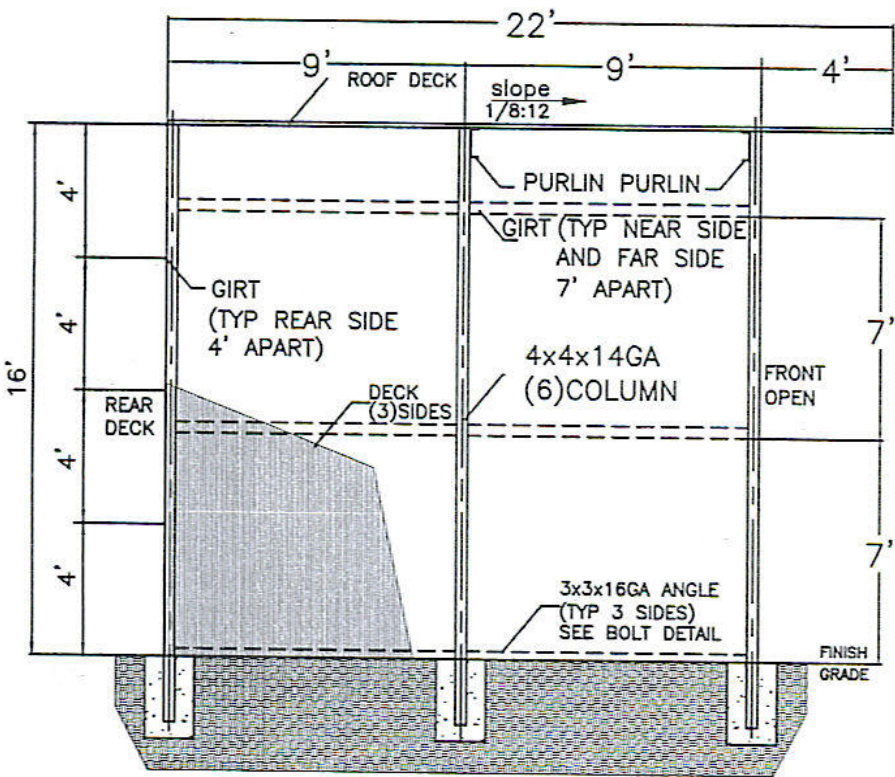
ROOF FRAMING PLAN

ASSEMBLY INSTRUCTIONS

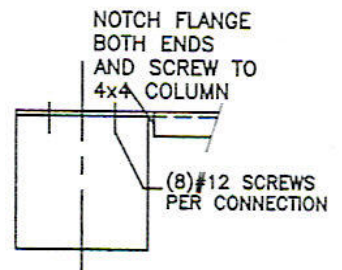
SET COLUMNS IN HOLES AND RUN STRING LINES AT GROUND LEVEL AND TOP OF THE COLUMNS. ALIGN COLUMNS AND CHECK DIAGONAL DIMENSIONS TO BE SQUARE. USE COLUMNS TEMPORARY BRACES. FILL HOLES WITH CONCRETE AND POSITION THE COLUMNS FOR THE ROOF SLOPE USING A LEVEL TO PLUMB AND STRING LINES FOR HEIGHT AND ALIGNMENT. WHEN CONCRETE IS CURED BOLT 3x3 ANGLE AS SHOWN, SCREW PURLINS & GIRTS TO THE COLUMNS AND ROOF & WALL DECK TO THE PURLINS & GIRTS.

NOTES

THIS PRODUCT IS VERY FLEXIBLE AND DIFFERENT TECHNOLOGIES CAN BE USED FOR INSTALLATION. DO NOT LIVE COLUMNS WITHOUT PROPER BRACING. EACH SHEET PROVIDES 36" OF COVERAGE IN WIDTH.

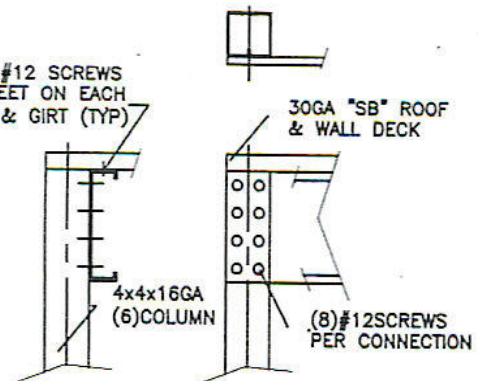


CROSS SECTION

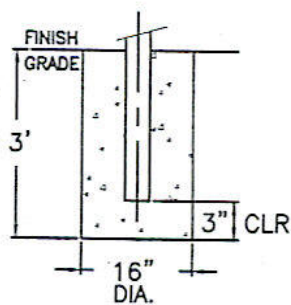


NOTCH DETAIL

USE (6) #12 SCREWS PER SHEET ON EACH PURLIN & GIRT (TYP)



BOLT DETAIL



ROUND FOOTING